

WaterITech specializes in the design and application of state-of-the-art hydrodynamic and eco-hydrological models, and advanced data analysis and visualizations

We address flooding, drought and water quality challenges, and transform models and data into actionable insights for sustainable water management.

SERVICES

1. HYDROLOGICAL & WATER QUALITY MODELLING

Application of state-of-the-art watershed models, 1D and 3D coupled hydrodynamic-ecological models for lakes, reservoirs and marine areas.

2. CLIMATE CHANGE IMPACT ASSESSMENTS

Development and application of long-term and short-term model scenarios for both research and management purposes.

3. ENVIRONMENTAL IMPACT ASSESSMENTS

Analysis of impacts of industrial discharges, land use, agricultural practices, BMPs, and TMDL for watersheds, lakes and reservoirs.

4. DIGITAL TWINS FOR HYDROLOGICAL & WATER QUALITY FORECASTING

Real-time data, short-term and seasonal forecasting of watershed hydrology, lake and reservoir water quality powered by WaterWebTools.

5. R&D PROJECTS

Participation as a partner or as a subcontractor in R&D projects, development of models for watersheds, lakes and reservoirs, and web- or QGIS-based platforms for dissemination of research outcomes.

6. TRAINING WORKSHOPS

Training sessions and workshops based on principles of active learning, meaning you will have lots of time to work with the materials hands-on.

7. REAL-TIME WATER QUALITY SURVEILLANCE

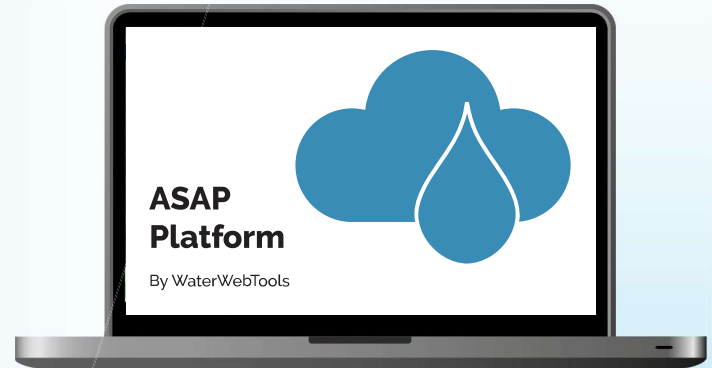
Design and assembly of an advanced real-time data buoy intended for water quality monitoring in rivers, lakes and reservoirs.

Onboarding the WaterWebTools forecasting solutions

We offer complete onboarding of existing or new model applications to WaterWebTools forecasting solutions.

- ✓ SWAT+ (Soil and Water Assessment Tool) watershed model
- ✓ GOTM-WET and GETM-WET lake, reservoir and marine models
- ✓ Maelstrom model for risk map approximations for urban flooding

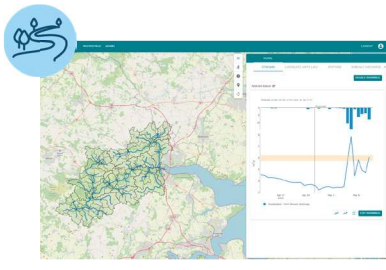
Models by WaterITech



↑
Weather data

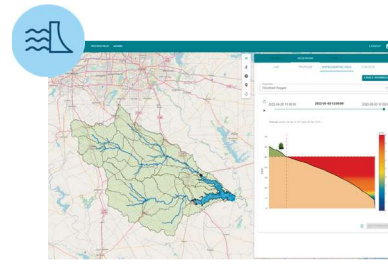
↑
IoT

↑↓
API



ASAP RURAL

Be prepared and plan smart with forecasted data for water resources across an entire river basin.



ASAP RESERVOIR

Use insights from forecasted data for your reservoir to improve your decision making and reservoir operations.



ASAP URBAN

Know about the risks of flooding around your most important assets and increase safety and awareness.



ASAP LIVE

Invest in your consumers, enrich them with real-time insights and increase consumer surplus.